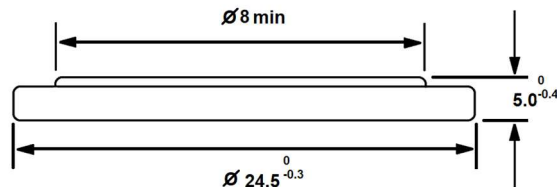




KODAK KCR2450 MAX Lithium coin cell

Effective: 24/04/2026



Dimensions are in millimetres

Chemical system:	Lithium/Manganese Dioxide, Li / MnO ₂
Designations:	IEC CR2450, ANSI 5029LC
Nominal Voltage:	3.0 V
Nominal Capacity:	560 mAh at 7.5 kOhms to 2.0 Volts
Weight:	7 g
Volume:	6.3 cm ³
Normal storage temperature:	+10 – +25 °C, RH no more than 75%.
Normal Operating temperatures:	-20 – +50 °C
Maximum Operating temperatures:	-40 – +65°C
Reaction:	Li + MnO ₂ → LiMnO ₂
Terminals:	Flat contacts
Jacket:	None
Approximate Lithium content:	<=0.1 grams / cell

Note:

- 1) No added Mercury / 99.9999% Mercury Free
- 2) No added Lead /99.999% Lead Free
- 3) No added Cadmium / 99.9999% Cadmium Free
- 4) No added PFOS (Perfluorooctane sulfonates)
- 5) This battery complies with ANSI C18, IEC 60086, and EU Directive 2013/56/EU & 2006/122/EC.
- 6) SDS sheets are available on request from Strand Europe Ltd.

DANGER: Keep batteries out of reach of children. If swallowed, the battery can cause serious injury or death. Severe burns can occur within hours of ingestion. If you suspect that a battery has been ingested, seek immediate medical attention. Have doctor call CHEMTREC Day or Night on 1-800-424-9300 / +1 703-527-3887. **CAUTION:** Ensure that the battery compartment is completely secure, meaning closed and locked to prevent easy access by children. If the battery compartment cannot be completely secured, discontinue use of the product or keep out of sight and reach of children.

